

**SOLUTION BROCHURE
IMPROVING THE EFFICIENCY AND TIMELINESS OF THE BENEFIT ENROLMENT PROCESSING**

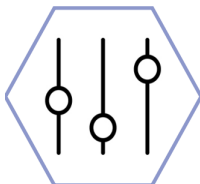
SMARTER BENEFIT ENROLMENT PROCESSING

END-TO-END SOLUTIONS



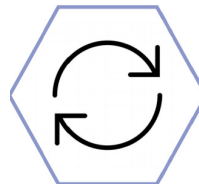
INTEGRATION

Enables consistent integration between systems



STREAMLINE

Streamline the overall benefit enrolment processing for customers



IMPLEMENTATION

Fast implementation with preconfigured accelerators and flexible framework



ONBOARD FASTER

Identify and remediate incorrect transactions to expedite the onboarding of new customers

HOW EFFICIENT IS YOUR BENEFIT ENROLMENT PROCESS?

The 2014 Affordable Care Act requires all Americans to carry health insurance. As a result, healthcare insurance providers are experiencing not only explosive growth, but internal growing pains as they adapt their in-house systems to comply with new legislative infrastructures and requirements.

While healthcare insurance providers are currently benefiting from mandated enrolment, they are also challenged with many new channels feeding into the enrolment system. Consequently, the higher enrolment requests are driving up error rates with many providers spending too much time and too many resources correcting enrolment failures due to poorly formatted EDI 834 transactions.

After all, if a Payer cannot effectively and efficiently enrol new clients, it affects their ability to start charging premiums - and that affects their bottom line.

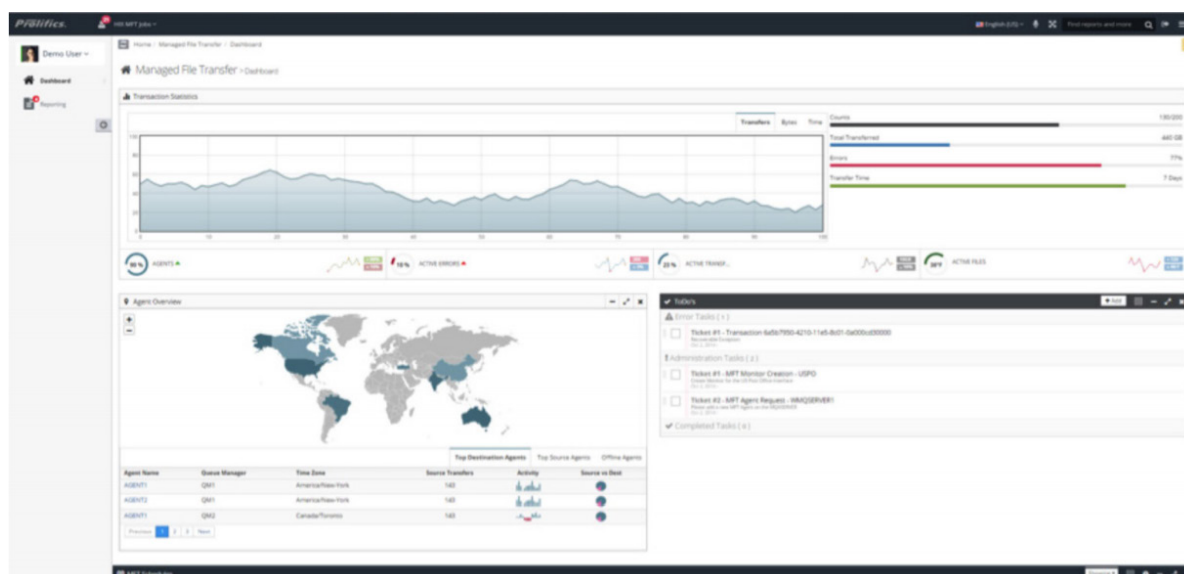
Expedite Your EDI 834 Benefit Enrolment Process

The Prolifics Testing Smarter Benefit Enrolment Processing solution is designed to monitor incoming EDI 834 Benefit Enrolment transactions and identify those transactions that are incorrectly formatted before they enter your enrolment system. Consisting of a Dashboard, prebuilt connectors, an integration framework, professional services and extensive testing services, improperly formatted Benefit Enrolment transactions are identified and transformed into the correct format or flagged within the Dashboard so they can more quickly be corrected to complete the enrolment process.

This streamlined approach to the identification and remediation of incorrect EDI 834 Benefit Enrolment transactions will expedite your ability to onboard new clients while eliminating the need for costly manual interventions.

Visibility into 834 Benefit Enrolment Transactions

The Smarter Benefit Enrolment Processing solution interface provides insight into benefit enrollment transactions through its Dashboard, as well as acting as the command and report interface for the benefit enrolment file transfers.



Implementing the Prolifics Benefit Enrolment Processing Solution

The Smarter Benefit Enrolment Processing solution for 834 Benefit Enrolment transactions is a well-defined solution to implement and test, based on the following project milestones:

• Scope Definition Call

- Conduct a preparation call to review IBM Integration Bus (IIB) processes and discuss resource requirements
- High Level Architecture
- Conduct an interactive workshop that will focus on implementing an ESB using IBM's Integration Bus in the insurance provider environment
- Provide a high level architecture document
- Deliver a proposal with recommendations for achieving both short and longer term goals

• Installation and Configuration Program

- Install and configure your IBM Integration Bus for 3 environments (Test, QA/Staging and Production)
- Administer basic instruction and mentoring on the use of the administration, maintenance and deployment automation

• Coding and Testing (Implement up to 2 representative use cases)

- Conduct a requirement gathering session for each use case
- Document the requirements and create a low-level technical specifications document, describing the implementation details for each use case
- Development of the IIB services using best practices approach
- Unit testing in development with tools such as SoapUI and RFHUtil

• Testing Support

- Provide testing support (bug fixes). The actual testing will be performed by the Customer QA team
- Provides tools to use for testing and automating testing

• Production Rollout

- Creation of go-live checklist working in conjunction with the Customer release management team
- Perform the deployment of 2 use cases in the Production environment

• Post-production Support

- Provide 1 week of post-production support

Beyond the 834 Benefit Enrolment Transaction Format

In addition to supporting the 834 Benefit Enrolment transaction format, the Prolifics Testing Healthcare Integration Kit also supports 837 (Claim) and 270/271 (Insurance Verification) transactions. This framework enables any type of data submission format to be transformed into a standard, enabling use by the designated application, so it can be extended to support other data submission applications as well.

Find Out More About the Smarter Benefit Enrolment Processing Solution

As the complexity of benefit enrolment transactions continues to grow, this Prolifics Testing solution can result in a faster, more efficient new client enrolment process, reducing the time associated with identifying, fixing, validating, and successfully processing 834 Benefit Enrolment transactions. Contact Prolifics Testing at **info@prolifics-testing.com** today to streamline your benefit enrolment processing process.



OUR COMPANY

Prolifics Testing is a specialist IT consultancy with a total focus in software testing - automation, performance, consultancy and training.

We deliver high quality, flexible software QA and testing services - supporting our clients with outsourced testing on demand, digital transformation, business as usual and specialist testing disciplines.

CONTACT US

Telephone
+44 (0) 20 8905 2761

Email:
info@prolifics-testing.com

Website:
www.prolifics-testing.com